

The Almanac



CHILLiwack
museum & archives

Museum:

45820 Spadina Ave
Chilliwack, BC, V2P 1T3
604.795.5210

Archives:

9291 Corbould Street
Chilliwack, BC V2P 4A6
604.795.9255

www.chilliwackmuseum.ca

info@chilliwackmuseum.ca

GAME ON! THE EVOLUTION OF SPORTS IN CHILLIWACK

We are thrilled to announce our upcoming annual exhibit Game On! The Evolution of Sports in Chilliwack. Chilliwack's sporting history is as long as its history as a community. From the formation of the Township of Chilliwack in 1873 and for much of the 20th century, Chilliwack was made up of many rural communities that all had their own local post offices, general stores and community halls. Differences between the rural and urban areas emerged but common to all of Chilliwack's residents was their passion for sports.



While early local municipal councils were preoccupied with the opening and improving of roads and the building of schools, the community rallied together to provide for such public needs as outdoor and indoor recreational facilities. Local athletic clubs sprung up in many communities to sponsor equipment, maintain crowds and fundraise for better transportation for out of town games. Crowds gathered in whatever way necessary to invest their money, time and skill into their sport.

This exhibit explores the role sports have played in building Chilliwack's cultural landscape. Learn about how sports help distract

CONTENTS

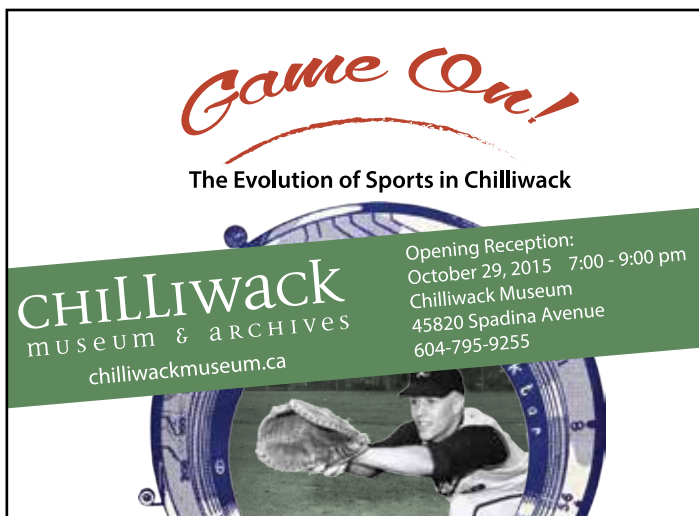
Game On! Exhibit Opens Oct. 22
Welcome Stephanie Clinton
Special for Teachers
Report from our Summer Student
Mark your Calendars - Oct. 29
The Place of the Museum in the City

STAFF

Matthew Francis, *Executive Director*
Alison Adamson,
Administrative and Volunteer Coordinator
Stephanie Clinton,
Education and Engagement Coordinator
Shannon Bettles, *Archivist*
Jane Lemke, *Curator*

BOARD OF DIRECTORS

Fred Feistmann, *President*
Pauline Heppner, *Vice President*
Robin Lister, *Treasurer*
Charlie Fortin, *Director*
Tia Halstad, *Director*
Esther Harder, *Director*
Bea Mazurenko, *Director*



Chilliwackians from the difficulties of war or what sport was considered “too violent for our model municipality” (hint: it involved hitting opponents!)

New to this exhibit are the additions of listening stations, where visitors can hear athletes discuss their experiences. Listening to those who experienced some of Chilliwack’s greatest sporting achievements can really bring the events to life.

The exhibit will run from October 22, 2015 to September 6, 2016. Please join us for the opening reception on October 29, 2015 from 7:00pm – 9:00 at the Museum.



ANNOUNCING NEW EDUCATION & ENGAGEMENT COORDINATOR

We are delighted to welcome Stephanie Clinton to the Chilliwack Museum and Archives as our new Education & Engagement Coordinator. Stephanie will be building upon the solid foundation laid by Brenda Paterson, who developed our School Programs over the course of her 31 year career.

Engaging new generations of both teachers and students will be a key aspect of Stephanie’s work in her new role. A certified teacher, Stephanie comes to us most recently from the Peel Art Gallery Museum and Archives (PAMA) in Ontario, and brings diverse experience as a Museum educator with her as she makes the cross-country move to Chilliwack. Not only has she led educational initiatives for PAMA, and the Harbourfront Centre in Toronto, Stephanie also facilitated the digiPlaySpace for the Toronto International Film Festival’s Bell Lightbox. An honours Anthropology graduate of York University, Stephanie completed her Bachelor of Education degree with a focus in First Nations, Métis, and Inuit Education at the University of Toronto.



Please join us in offering Stephanie a warm Chilliwack welcome as she joins our Museum and Archives team! There are exciting opportunities ahead to connect people of all ages and backgrounds with Chilliwack’s history.

SPECIAL FOR TEACHERS!

This fall’s education programs will be rolled out as they become available as our new Education & Engagement Coordinator becomes familiar with the many tasks at hand. Stay tuned as we launch our new online School Programs booking system designed to make booking easier: chilliwackmuseum.ca

TACKLING EXHIBIT RESEARCH AND TEXTILE COLLECTIONS

From May through August 2015, Mikaela Ramdial joined us as a summer student Curatorial Assistant with the support of the Government of Canada's Young Canada Works program. Mikaela had the opportunity to be a part of the inner workings of the Museum, participating in projects with the Curator and Archivist, helping to manage the information and items brought in from the depths of Chilliwack's history.

One of Mikaela's tasks was undertaking research for *Game On! The Evolution of Sports in Chilliwack*, our new exhibit opening October 22nd. Her work entailed delving into old newspaper articles, listening to recordings of seniors describing memorable sports teams and looking through old pictures of the 1937-38 basketball champions. It also involves a lot of Google maps! Mikaela located venues where the first baseball teams played and relate it to the geography that Chilliwack residents know today. For example, she spent a day researching the old fairgrounds, the property just outside of her Evergreen Hall window. As Mikaela saw maps and listened to recorded stories about the horse races and ball games there, it was so interesting to know that those memories happened right beneath her office chair. Thousands came to this place to celebrate Dominion Day or agricultural success. It brings an entirely new perspective to the City of Chilliwack and the way that sports and local fairs brought so many people together in the 1920s, as it does today for games at Exhibition Park.

Mikaela also took part in our ongoing Collections Management responsibilities, helping

with the organization and preservation of artifacts donated to the museum. Only a very small percentage of the object collection is on exhibit at the Museum, and there are the shelves upon shelves of objects in storage that are connected to the diverse stories of Chilliwack. Our summer Curatorial Assistant worked specifically with the textiles - artifacts made of fabric. Each object is stored according to its shape, condition and artifact type. Mikaela gathered flags, pennants and banners, catalogued them, then took photos and re-packed them to last for another 100 years. When a perfectly preserved banner comes out of an archival box, it's a reminder of when the promoted event or organization on the front played such a prominent role in the community. Chilliwack's roots are maintained and remembered.

"My summer role here at the Museum is the most fascinating job I could have acquired"

Mikaela recounts: *"My summer role here at the Museum is the most fascinating job I could have acquired. Without access to all of this history, I would never know that the Rosedale ballpark is the same one from the 1910s or that Ryder Lake hosted the international dew worm races! I learn so much, and hopefully I help make the museum staff's future exhibit planning a little bit easier, so that Chilliwack's memories can be taught to the community more fully."*



The Chilliwack Museum and Archives staff wish Mikaela all the best as she spends time in Africa this year, and returns to Simon Fraser University where she studies French and Education.

MARK YOUR CALENDARS: EXHIBIT OPENING OCT 29th

Oct 29th, 7:00pm - 9:00pm - Please join us at the Museum as we celebrate the opening of our annual exhibit: *Game On! The Evolution of Sports in Chilliwack*. Free admission, all are welcome.



THE PLACE OF THE MUSEUM IN THE CITY



What do you think of this picture? We don't know for sure the reason for this crowd, or the precise date it took place, but they did gather here. We know it is some years on from the construction of the building in 1911-1912, as the trees and foliage have matured, and ivy sheathes the balcony and staircases. This building then served as Chilliwack's City Hall, positioned symbolically at the geographic heart of the community, just west of Five Corners. It was the site of many significant speeches, the War Memorial, animated conversations about ideas that matter, as well as fun civic happenings. When Chilliwack wanted to think through something together – this is where we came. Could this place become that again?

We know that museums and archives are about conserving historic objects and records. This is central to our work. I used to joke that conserving historic places often took hundreds of hours of conversation, which often turned out to be true. But what if

museums are as much about *conversation* as they are about *conservation*?

Monday evening, July 6th, the Museum played host to the first event in our new Speakers' Series. Held in conjunction with the Royal BC Museum's *Species at Risk* exhibit's visit to Chilliwack, approximately 40 people came out to enjoy some lively discussion about the way Museums and other organizations engage their communities and educate in today's fast-face technological society.

Featured panelists included featured panelists included: Dr. Gavin Hanke, Curator, Vertebrate Zoology, and Chris O'Connor, Family & Schools Program Producer, both from the Royal BC Museum; Janet Hutchinson, Executive Director, Great Blue Heron Nature Reserve; and John Martin, Member of the Legislative Assembly, Chilliwack.

The evening was a great way to explore the role of travelling exhibits like *Species at Risk*, and to think alongside interested members of the community about what museums, archives, and other cultural organizations can do to connect.

Stay tuned over the next months as we continue the Speakers' Series – addressing topics that open up Chilliwack's history in new and meaningful ways. The Speakers Series takes place at the Museum and will always be free.



Canadian
Heritage

Patrimoine
canadien



CITY OF
CHILLIWACK



BRITISH COLUMBIA
ARTS COUNCIL
Supported by the Province of British Columbia

Published by the Chilliwack Museum and Archives (c) 2015

The Chilliwack Museum and Archives are operated by the Chilliwack Museum and Historical Society.