

The Almanac



CHILLiwack
museum & archives

Museum:

45820 Spadina Ave
Chilliwack, BC, V2P 1T3
604.795.5210

Archives:

9291 Corbould Street
Chilliwack, BC V2P 4A6
604.795.9255

www.chilliwackmuseum.ca

info@chilliwackmuseum.ca

NEW EXHIBIT OPENING FEBRUARY 21

Our upcoming exhibit, *Sítel Coast Salish Baskets*, explores the making, trading and collecting of Coast Salish cedar baskets featuring baskets from the Museum's collection and from the Stó:lō Research and Resource Management Centre.

The exhibit will look at the various uses and functions of cedar baskets throughout Chilliwack's history, beginning with the daily use of the baskets before the arrival of Spanish explorers in the 18th century. From the 1880s through the 1920s, cedar basket weaving was transformed from a practical domestic need to a source of necessary economic support for Coast Salish families. During this time, most baskets were made with the specific purpose of trading with Anglo-European families. Basket makers created new shapes, uses, weaves, dyes and decoration to accommodate Anglo-European tastes.

Since the 1960s, there has been a resurgence of basket making in Coast Salish culture. This resurgence has resulted in a new generation of Coast Salish basket makers learning this cultural custom.

The exhibit opens in the Chambers Gallery with a reception on Saturday, February 21st from 1:00 pm – 3:00 pm.



CONTENTS

New Exhibit Opening February 21
Welcome Matthew Francis
Project Funding
Message from Ron Denman
Curious Corner
New Group in Town
Volunteer Spotlight - Lawrie Edwards
AGM Announcement
Reciprocal Research Network
Curious Corner Answer

STAFF

Ron Denman, *Interim Director*
Matthew Francis, *Executive Director*
Alison Adamson, *Administrative Assistant*
Shannon Bettles, *Archivist*
Jane Lemke, *Curator*
Brenda Paterson, *Education Coordinator*

BOARD OF DIRECTORS

Fred Feistmann, *President*
Pauline Heppner, *Vice President*
Robin Lister, *Treasurer*
Charlie Fortin, *Director*
Tia Halstad, *Director*
Esther Harder, *Director*
Bea Mazurenko, *Director*

WELCOME MATTHEW FRANCIS

At the beginning of February, the Chilliwack Museum and Archives will welcome Matthew Francis as the new Executive Director of the organization. Matthew is leaving his position with the Province of Alberta where he has been the Manager, Municipal Heritage Services, Alberta Culture since 2008. His duties there included the management of all Government of Alberta programs and issues relating to municipal heritage issues. He has also worked as Head, Municipal Heritage Partnership Program, Outreach Officer (Province of Alberta); Associate, David J. Goa & Associates Consulting / British Museum / Royal Alberta Museum (Edmonton, AB & London, UK) and as an Instructor at Ambrose University College, Calgary, Alberta.

He has a Master of Arts degree from the University of Manchester (UK) where his dissertation topic focussed on sacred space and place.

Matthew's strong communication skills combined with his management skills and knowledge of museums, archives, and the heritage field made him an excellent choice for the position.

Matthew has extensive ties to Chilliwack where he

PROJECT FUNDING

Last fall, our Archivist Shannon Bettles, submitted a grant application to the Chilliwack Foundation for improvements to our electronic records back-up system. Electronic records consist of critical administrative files and include the community's digital archives, which include digital photographs, digitized film, electronic city records, newspapers, maps, and includes the collection catalogue, indexes, finding aids, research, and reference materials.

Museum and Archives staff and volunteers are constantly digitizing records for improved access. Digital



grew up and attended Chilliwack Secondary School. His parents and siblings continue to live in the community. In his application he notes that "I never properly thanked you [Ron Denman, retiring Director] for those hours you spent with me as a student volunteer from the High School, but I wanted to seize the day. That experience had a tremendous impact, and kindled something in me. I believe it set me on the path for my own career in heritage and public history".

We welcome Matthew to his new position and, in the coming years, look forward to the changes that will occur under his leadership.

donations have risen in the past few years as businesses, government, individuals, and organizations produce electronic records and deposit them at the Chilliwack Archives.

With the Chilliwack Foundation grant of \$6,365.30, the Archives will be able to purchase new hardware.

The Museum and Archives has partnered with the Chilliwack Foundation in the past, who most recently provided funding for the digitization of the *Chilliwack Progress* Newspapers.

We sincerely appreciate the Chilliwack Foundation's ongoing support and contributions.

MEET THE NEW EXECUTIVE DIRECTOR

Saturday, February 21st, 1:00 pm to 3:00 pm - New Executive Director Matthew Francis will be on hand during our exhibit opening at the Museum's Chambers Gallery to meet and greet members and visitors. Please join us in welcoming him to the team.

MESSAGE FROM RON DENMAN, INTERIM DIRECTOR

Last August, I was asked by the Historical Society Board to act as the interim director of the Museum and Archives, a task that I gladly accepted. What a delight to be back, on a part-time basis, with Alison, Shannon, Brenda and Jane. What a great team. We accomplished a lot in the last few months but absolutely none of it would have been possible without the positive approach and professionalism of the staff.

A recommendation coming from the City's Parks, Recreation and Culture strategic plan was that more public programming be offered by the Museum and Archives. We realized that due to space constraints, the most viable public programming place was the Chambers Gallery. Some renovations were required to the room in order to meet this objective. The renovations, which include new display cases, an audio-visual centre and pony walls, will be completed in time for the opening of *Sí:tel Coast Salish Baskets* on February 21. As part of this change, the Chilliwack colonial settlers photographs were removed. The stories and photographs of those in the historic photographs will be available at the Archives for researchers. These moves will allow us to showcase more of our collection and offer a more program friendly room.

My return to work ends in February. I have thoroughly enjoyed the last few months working with staff, the

Board and the community. I will miss the place but feel confident that Matthew can provide the vision and skills that are necessary to move the organization forward in the coming years.

NEW GROUP IN TOWN

Heritage Chilliwack is a recently formed non-profit group whose purpose is to engage, advocate for and promote Chilliwack's heritage.

While not affiliated with the Chilliwack Museum and Archives, we are able to provide them with information about Chilliwack's history. To find out more please contact Laura Reid at reidll@telus.net.

CURIOUS CORNER

Can you guess what this object is? Hint: It makes music! (The answer is on the back page).



VOLUNTEER SPOTLIGHT, LAWRIE EDWARDS

This time we direct our spotlight onto Lawrie Edwards who has been volunteering with the Museum and Archives since May, 2012.

Lawrie learned of volunteer opportunities from Sharon Lawrence while undertaking research on his family history during a genealogy course. In his time with us, Lawrie has worked on a variety of archival projects, most recently, an index for the Norman's Photographic Studio collection.

Lawrie, an avid golfer and collector of antique cars (namely a '41 Ford Super Deluxe Sedan and a '58 Meteor Sedan Delivery), also volunteers at the Chilliwack Museum's booth at the annual Chilliwack Christmas Craft Market. We would like to thank Lawrie for his time and valuable contributions towards preserving Chilliwack's history!

MARK YOUR CALENDARS - 2015 AGM

2015 AGM NOTICE - The Annual General Meeting of the Chilliwack Museum and Historical Society will be held on Saturday, April 18, 1:00 pm in the Museum's Chambers Gallery. The business of the meeting will be the presentation of the 2014 audited financial statement, election of officers and directors and such other business that promotes the Society.

RECIPROCAL RESEARCH NETWORK (RRN)



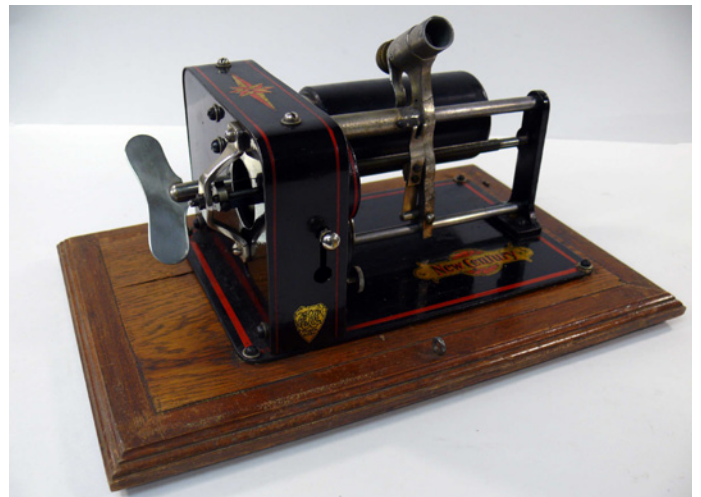
In tandem with the upcoming Sí:tel Coast Salish Baskets exhibit, we are pleased to announce that our Coast Salish basket collection has been successfully launched on the Reciprocal Research Network's website. The Reciprocal Research Network, or RRN for short, is an interconnected website used by institutions from all over North America to connect the stories and objects of Canada's First Peoples. The website is a joint effort, co-developed by the Musqueam Indian Band, the Stó:lō Nation/Tribal Council, the U'mista Cultural Society and the Museum of Anthropology at UBC. For both communities and museums, the RRN is groundbreaking in facilitating communication and fostering lasting relationships between originating communities and institutions around the world. We are thrilled to be participating in this virtual conversation! Researchers can view the collections from:

<http://www.rrncommunity.org>

IT'S A CYLINDER RECORD PLAYER

Cylinder record players, or cylinder phonographs, were the earliest commercial medium of reproducing sound. The recording was engraved onto the cylinder and reproduced by the cylinder record player.

Similar to the debate that raged in 2005-2007 between Blu-Ray and HD DVDs, disc records and cylinder records competed for many decades at the end of the 19th century, with disc records eventually triumphing in the marketplace. Although there were many reasons, disc records were more affordable to produce and therefore, more affordable for consumers to purchase.



This cylinder record player belonged to the Tunbridge family of Chilliwack, who purchased the player in 1910.



Canadian Heritage
Patrimoine canadien



CITY OF CHILLIWACK



BRITISH COLUMBIA
ARTS COUNCIL
Supported by the Province of British Columbia